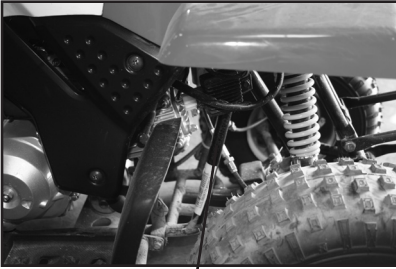


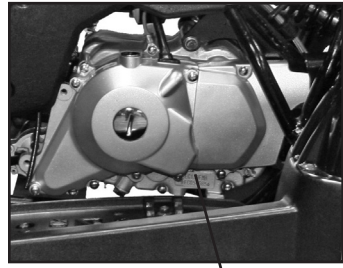
## SERIAL NUMBER LOCATION

You need to know the frame and engine serial numbers to get title documents for your ATV. You also need these numbers to help your authorized service center or Baja Motorsports order parts.

The frame number is stamped on the front of the frame as shown in the photograph. The engine serial number is stamped on the left side of the crankcase.



Frame number



Engine number

Write down the serial numbers here for your future reference

Frame No.:

Engine No.: